

HARI

Holistic Assessment Rapid Investigation

HARI Definition

Page 6

A multidisciplinary community service for adults with complex medical and rehabilitation needs



In other words

A ONE STOP SHOP

- For health assessment
- Investigations
- Physiotherapy
- Occupational therapy





HARI Vision

- Keeping people well
- Prevent unplanned hospital admissions
- Reduce the risk of falls
- Enable independent living
- Rehabilitation



Referral To HARI



Via your MERTON GP

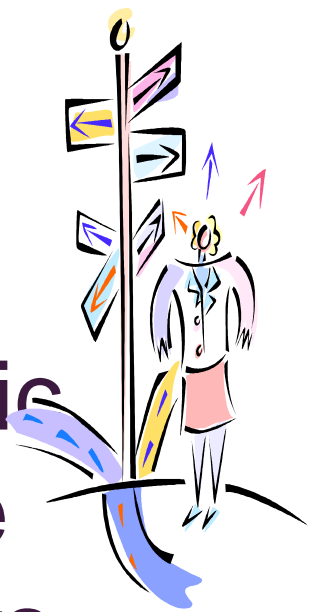
Page 10

- *Transport can be offered for those unable to travel independently*



HARI Referrals

From your GP to HARI for an Holistic
assessment with Advanced Nurse
Practitioners/consultants/therapists



Page 11

OR

From GP/therapy/falls service to
 Rehabilitation only

Meet the HARI team

- Consultant Physicians
- Advanced Nurse Practitioners
- Nurses
- Health Care Assistants
- Occupational Therapists
- Physiotherapists
- Rehabilitation Assistants
- Administrators
- Pharmacist
- Podiatry – Regular sessions





This page is intentionally left blank